

SL C-2 SOUNDBAR XL 1672

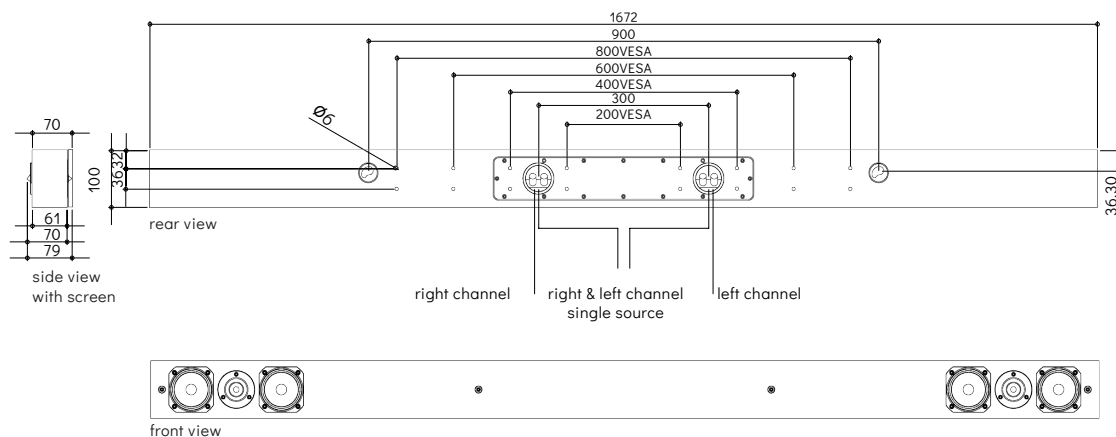
Wired as a single channel configuration, the Artcoustic Soundbar is a highly sensitive speaker and is therefore capable of reproducing very high sound pressure levels from modest (20 Watt+) amplifiers.

Operating Range: 80 Hz (-3 dB) to 40 kHz
 Sensitivity: Single Channel 97 dB / LR 91 dB
 Maximum Power Handling 2 hours of 6 dB crest factor pink noise,
 Single Channel 120 Watt RMS / LR 60 Watt RMS (AES Standard)
 Impedance: Single Channel 4 ohms / LR 8 ohms nominal
 Average Peak SPL: Single Channel 114 dB / LR 108 dB
 Weight: 8 kg
 Dimensions: H: 100 W: 1672 D: 70 mm
 Cabinet: Black, White, RAL, NCS
 Screen: Black, White, RAL, NCS, Digital Print



SCHEMATICS

dimensions are in mm



POLAR RESPONSE

horizontal polar response 2m

16000Hz -----
 6500Hz ----
 2500Hz ---
 1000Hz ——

vertical polar response 2m

3D polar response 2m

